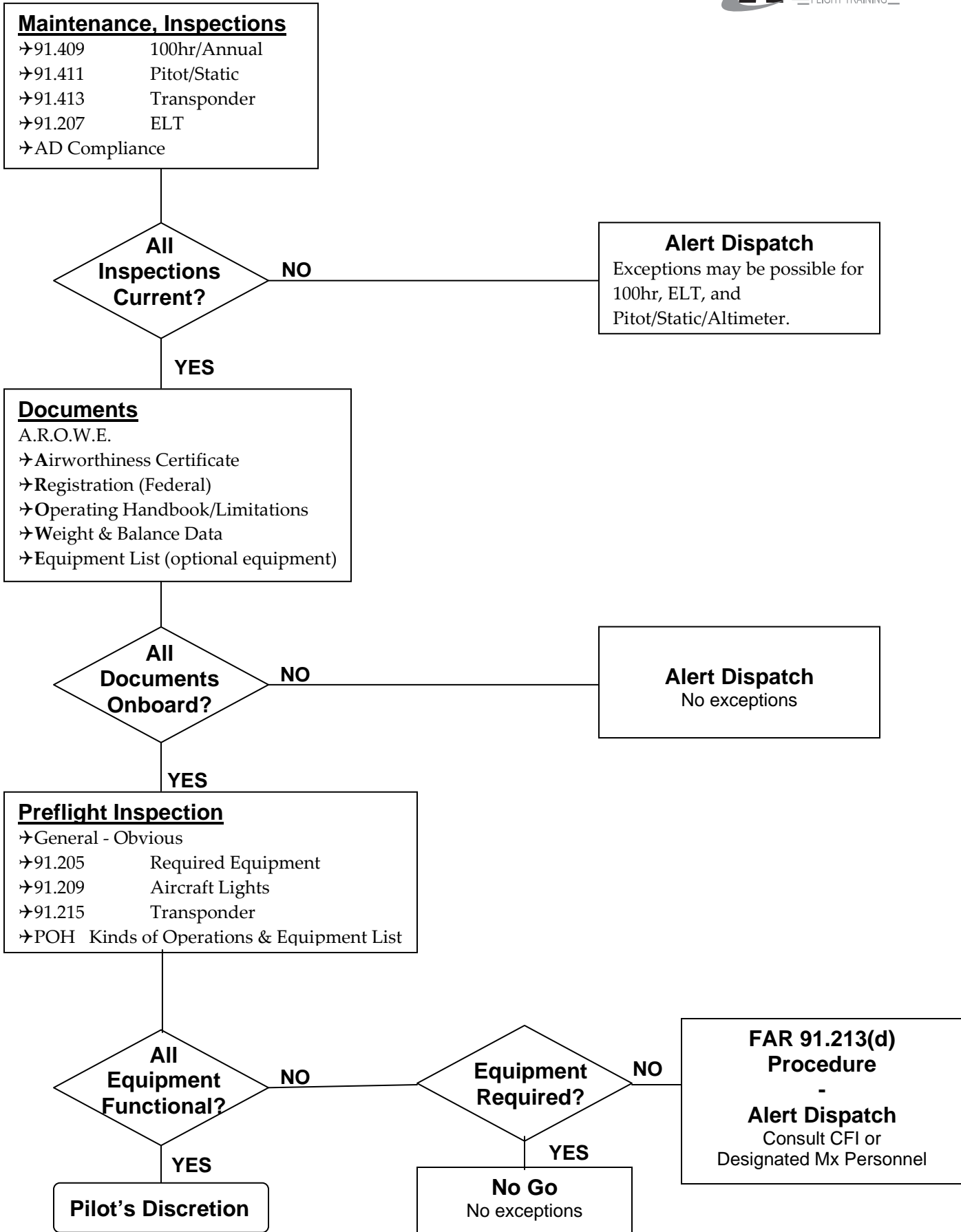


# Determining Airworthiness Before Flight



**Maintenance, Inspections**  
 →91.409 100hr/Annual  
 →91.411 Pitot/Static  
 →91.413 Transponder  
 →91.207 ELT  
 →AD Compliance

**All Inspections Current?**

**Alert Dispatch**  
 Exceptions may be possible for  
 100hr, ELT, and  
 Pitot/Static/Altimeter.

**Documents**  
 A.R.O.W.E.  
 →Airworthiness Certificate  
 →Registration (Federal)  
 →Operating Handbook/Limitations  
 →Weight & Balance Data  
 →Equipment List (optional equipment)

**All Documents Onboard?**

**Alert Dispatch**  
 No exceptions

**Preflight Inspection**  
 →General - Obvious  
 →91.205 Required Equipment  
 →91.209 Aircraft Lights  
 →91.215 Transponder  
 →POH Kinds of Operations & Equipment List

**All Equipment Functional?**

**Pilot's Discretion**

**Equipment Required?**

**No Go**  
 No exceptions

**FAR 91.213(d) Procedure**  
 -  
**Alert Dispatch**  
 Consult CFI or  
 Designated Mx Personnel